

Placenta growth factor augments airway hyperresponsiveness via leukotrienes and IL-13

Marthe-Sandrine Eiyimo Mwa Mpollo, ... , Gurjit K. Khurana Hershey, Punam Malik

J Clin Invest. 2016;126(2):571-584. <https://doi.org/10.1172/JCI77250>.

Research Article

Pulmonology

Airway hyperresponsiveness (AHR) affects 55%–77% of children with sickle cell disease (SCD) and occurs even in the absence of asthma. While asthma increases SCD morbidity and mortality, the mechanisms underlying the high AHR prevalence in a hemoglobinopathy remain unknown. We hypothesized that placenta growth factor (PIGF), an erythroblast-secreted factor that is elevated in SCD, mediates AHR. In allergen-exposed mice, loss of *Plgf* dampened AHR, reduced inflammation and eosinophilia, and decreased expression of the Th2 cytokine IL-13 and the leukotriene-synthesizing enzymes 5-lipoxygenase and leukotriene-C4-synthase. *Plgf*^{-/-} mice treated with leukotrienes phenocopied the WT response to allergen exposure; conversely, anti-PIGF Ab administration in WT animals blunted the AHR. Notably, Th2-mediated STAT6 activation further increased PIGF expression from lung epithelium, eosinophils, and macrophages, creating a PIGF/leukotriene/Th2-response positive feedback loop. Similarly, we found that the Th2 response in asthma patients is associated with increased expression of PIGF and its downstream genes in respiratory epithelial cells. In an SCD mouse model, we observed increased AHR and higher leukotriene levels that were abrogated by anti-PIGF Ab or the 5-lipoxygenase inhibitor zileuton. Overall, our findings indicate that PIGF exacerbates AHR and uniquely links the leukotriene and Th2 pathways in asthma. These data also suggest that zileuton and anti-PIGF Ab could be promising therapies to reduce pulmonary morbidity in SCD.

Find the latest version:

<https://jci.me/77250/pdf>



Placenta growth factor augments airway hyperresponsiveness via leukotrienes and IL-13

Marthe-Sandrine Eiyomo Mwa Mpollo,^{1,2} Eric B. Brandt,^{2,3} Shiva Kumar Shanmukhappa,⁴ Paritha I. Arumugam,¹ Swati Tiwari,¹ Anastacia Loberg,¹ Devin Pillis,¹ Tilat Rizvi,^{1,5} Mark Lindsey,^{2,3} Bart Jonck,⁶ Peter Carmeliet,⁷ Vijay K. Kalra,⁸ Timothy D. Le Cras,^{2,9} Nancy Ratner,¹ Marsha Wills-Karp,¹⁰ Gurjit K. Khurana Hershey,^{2,3} and Punam Malik^{1,2,5}

¹Division of Experimental Hematology and Cancer Biology, Cancer and Blood Institute, Cincinnati Children's Hospital Medical Center (CCHMC), Cincinnati, Ohio, USA. ²Department of Pediatrics, University of Cincinnati, Cincinnati, Ohio, USA. ³Division of Asthma Research, ⁴Department of Pathology, and ⁵Cancer and Blood Institute, CCHMC, Cincinnati, Ohio, USA. ⁶ThromboGenics NV, Heverlee, Belgium.

⁷Laboratory of Angiogenesis and Neurovascular Link, Vesalius Research Center, Department of Oncology and VIB, University of Leuven, Leuven, Belgium. ⁸Department of Biochemistry and Molecular Biology, University of Southern California, Los Angeles, California, USA. ⁹Division of Pulmonary Biology, CCHMC, Cincinnati, Ohio, USA. ¹⁰Johns Hopkins Bloomberg School of Public Health, Baltimore, Maryland, USA.

Airway hyperresponsiveness (AHR) affects 55%–77% of children with sickle cell disease (SCD) and occurs even in the absence of asthma. While asthma increases SCD morbidity and mortality, the mechanisms underlying the high AHR prevalence in a hemoglobinopathy remain unknown. We hypothesized that placenta growth factor (PlGF), an erythroblast-secreted factor that is elevated in SCD, mediates AHR. In allergen-exposed mice, loss of *Plgf* dampened AHR, reduced inflammation and eosinophilia, and decreased expression of the Th2 cytokine IL-13 and the leukotriene-synthesizing enzymes 5-lipoxygenase and leukotriene-C4-synthase. *Plgf*^{-/-} mice treated with leukotrienes phenocopied the WT response to allergen exposure; conversely, anti-PlGF Ab administration in WT animals blunted the AHR. Notably, Th2-mediated STAT6 activation further increased PlGF expression from lung epithelium, eosinophils, and macrophages, creating a PlGF/leukotriene/Th2-response positive feedback loop. Similarly, we found that the Th2 response in asthma patients is associated with increased expression of PlGF and its downstream genes in respiratory epithelial cells. In an SCD mouse model, we observed increased AHR and higher leukotriene levels that were abrogated by anti-PlGF Ab or the 5-lipoxygenase inhibitor zileuton. Overall, our findings indicate that PlGF exacerbates AHR and uniquely links the leukotriene and Th2 pathways in asthma. These data also suggest that zileuton and anti-PlGF Ab could be promising therapies to reduce pulmonary morbidity in SCD.

Introduction

Sickle cell disease (SCD) is one of the most prevalent genetic disorders worldwide. It is caused by a mutation in the β -globin gene that results in sickle-shaped rbc during deoxygenation (1, 2). Adhesion of rbc and leukocytes to the endothelium, rbc sickling, and adhesion of sickle rbc to wbc result in vascular occlusions and multiple end-organ complications. However, the oxygen tension in lungs is too high for sickle hemoglobin polymerization. Indeed, the lung is the only organ where sickled rbc returning from the venous vasculature can unsickle. Despite this, acute and chronic lung diseases are major complications of SCD, and independent risk factors for morbidity and mortality in these patients (3, 4) and mechanisms behind them are largely unknown. Airway hyperresponsiveness (AHR), a dynamic narrowing of the lower airways, is highly prevalent in patients with SCD, affecting 55%–77% of children (5–7) and 33% of adults with SCD (8, 9). In contrast, the reported prevalence of AHR is 6%–20% in the African-American and black Caribbean pediatric population (6, 10).

Clinically, AHR is a key feature of asthma and is assessed using a provocative challenge (e.g., methacholine challenge) to

induce a measurable bronchoconstriction. In SCD, the incidence of AHR is much higher than that of clinically symptomatic asthma (5, 6, 10–12) and is present without clinical features of asthma (wheezing, exhaled NO, and positive skin test to aeroallergens). But unlike asthma, which is a known risk factor for morbidity in SCD (13–16), the mechanism behind high AHR and its clinical significance is unknown. In SCD, biomarkers of hemolysis rather than those of asthma show a strong correlation with AHR (7). This led us to hypothesize that the etiology of the high AHR prevalence in SCD may be related to erythroid cells.

Following allergen stimulation, AHR is driven by a potent Th2 immune response that primes B cells to release allergen-specific IgE and drives lung inflammation. Th2 cytokines, such as IL-13 and IL-4 (17), stimulate airway smooth muscle contraction, recruit inflammatory cells, and increase mucus production; congestion and constriction of the airway lumen contributes to its remodeling (18, 19). In SCD, AHR has been presumed to occur secondarily to the leukocytosis and inflammation present at steady state. Notably, SCD patients also have elevated levels of LTE₄ and LTB₄ at steady state (20, 21). LTB₄, a potent neutrophil inflammatory molecule (22), and cysteinyl LTs (CysLT) have been implicated in different aspects of allergen-induced asthma (18, 23). CysLT receptor inhibitors of 5-lipoxygenase (5-LO, encoded by *Alox5*) inhibitors are currently licensed for use for the treatment of asthma in humans (24, 25).

Conflict of interest: B. Jonck is an employee and P. Carmeliet is on the board of ThromboGenics NV. ThromboGenics NV provided the anti-PlGF Ab.

Submitted: May 27, 2014; **Accepted:** November 12, 2015.

Reference information: *J Clin Invest.* 2016;126(2):571–584. doi:10.1172/JCI77250.

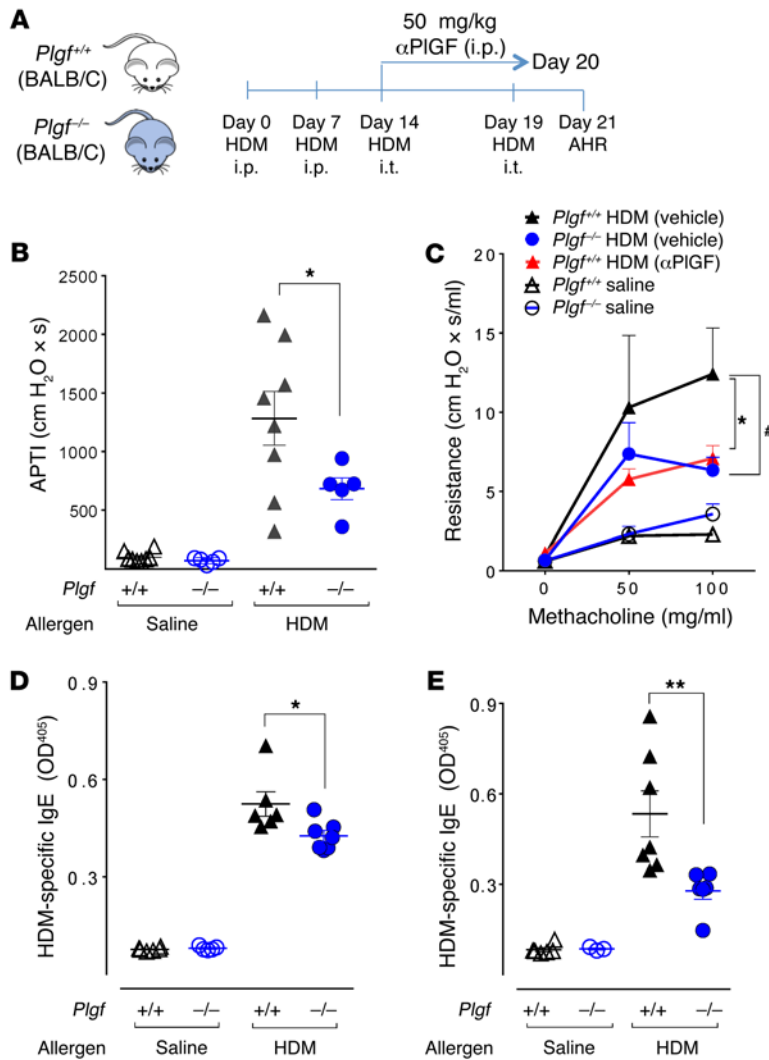


Figure 1. PIGF deficiency blunts AHR. (A) Experimental schema of induction of AHR in BALB/c mice. Mice were sensitized to HDM or saline i.p. and then exposed to HDM i.t. at the indicated time points; airway responsiveness was measured 48 hours after the last i.t. HDM exposure. (B) Airway responsiveness in *Plgf*^{+/+} or *Plgf*^{-/-} mice was measured by airway pressure inflation after a challenge with acetylcholine. **P* < 0.05 by 1-way ANOVA. (C) Airway responsiveness was also measured in response to increasing concentrations of methacholine using a forced oscillatory technique. HDM-treated *Plgf*^{+/+} mice either injected with vehicle (Saline) or α PIGF. **P* < 0.05 *Plgf*^{+/+} HDM (vehicle) versus *Plgf*^{-/-} HDM; #*P* < 0.05 *Plgf*^{+/+} HDM (vehicle) versus *Plgf*^{+/+} HDM (α PIGF) by 2-way ANOVA. (D and E) Plasma IgE levels in *Plgf*^{+/+} and *Plgf*^{-/-} measured in BALF after the last i.p. sensitization with HDM (D) or 48 hours after the last HDM airway exposure (E). **P* < 0.05, ***P* < 0.01 by 1-way ANOVA. All data are presented as mean \pm SEM; each symbol represents an individual mouse; *n* = 5 animals in the saline-treated groups and 6–10 animals in the HDM-treated groups. Results are from 1 experiment (B) and representative of 2 independent experiments (C–E).

Our group previously reported that placenta growth factor (PLGF), an erythroid cell-secreted growth factor that belongs to the vascular endothelial growth factor family, is increased in plasma of patients with SCD and contributes to the baseline inflammation and features of pulmonary hypertension (26, 27). Herein, we hypothesized that *PLGF* mediates the high prevalence of AHR in SCD. We utilized genetic and pharmacological ablation of *Plgf* in WT mice and Berkeley sickle mice (hereafter termed HbS mice) (28). We have previously reported that crosses between *Plgf* KO and HbS mice were born extremely rarely, and the few born were runted and infertile (29). Hence, we studied AHR in *Plgf*-deficient and HbS mice separately. Herein, we show that *Plgf* is a novel mediator of AHR.

Results

PIGF deficiency reduces allergen-induced AHR. To test the functional relevance of PIGF signaling in AHR development, we utilized BALB/c mice genetically lacking *Plgf* (*Plgf*^{-/-}) and WT BALB/c controls (*Plgf*^{+/+}). We first established that *Plgf* deficiency had no effect on lung mechanics at baseline (Supplemental Figure 1). To generate a model of allergic AHR, *Plgf*^{-/-} and *Plgf*^{+/+} mice were sensitized by i.p. injections with house dust mite (HDM) allergen extract on days 0 and 7, followed by 2 rounds of airway exposure

to HDM via intratracheal (i.t.) delivery on days 14 and 19 (Figure 1A). Airway sensitivity was measured on day 21 after the administration of a cholinergic agent using 2 well-established methodologies: the airway pressure time inflation and the forced oscillatory technique, which measure the AHR via airway pressure time index (APTI) (30) and airway resistance (R) (31), respectively.

Increased AHR (APTI \geq 300 cm H₂O \times s) was detected in *Plgf*^{+/+} mice exposed to HDM, as compared with their saline-exposed counterparts (Figure 1B). However, *Plgf*^{-/-} mice exposed to HDM showed a 2-fold reduction in AHR compared with HDM-exposed *Plgf*^{+/+} mice (683 \pm 94 cm H₂O \times s vs. 1,283 \pm 229 cm H₂O \times s, respectively, Figure 1B). We confirmed the decrease in AHR in *Plgf*^{-/-} mice using the forced oscillatory technique and observed the same results (Figure 1C). PIGF did not directly induce AHR in *Plgf*^{+/+} mice, when delivered intranasally into the airways (Supplemental Figure 2). Taken together, our data show that *PIGF* indirectly exacerbates allergen-mediated AHR.

To determine if PIGF exacerbates allergen sensitization, we measured circulating allergen-specific IgE in the plasma of *Plgf*^{+/+} and *Plgf*^{-/-} mice directly after i.p. allergen sensitization (day 14) or after i.t. allergen exposure (day 21). HDM-specific IgE was significantly lower in *Plgf*^{-/-} mice than in *Plgf*^{+/+} mice within 2 weeks of

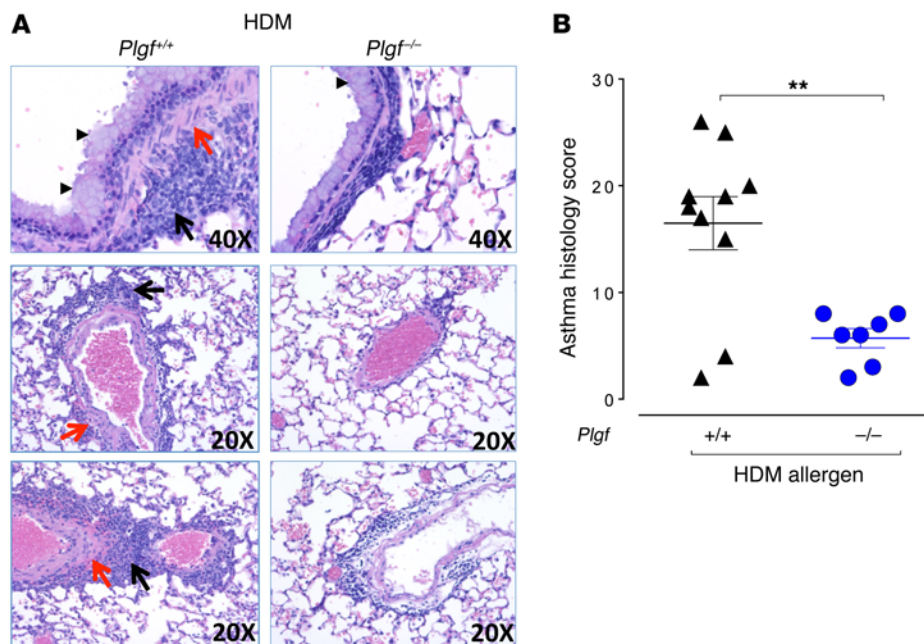


Figure 2. PIGF deficiency reduces airway inflammation. (A) Representative H&E lung sections of *Plgf*^{+/+} and *Plgf*^{-/-} mice after i.p. sensitization and i.t. challenge with HDM depicting goblet cell hyperplasia (arrowheads) and smooth muscle proliferation (red arrows) in the peribronchiolar and perivascular regions, and inflammatory infiltrates in the alveolar sacs (black arrows). (B) Lung histological inflammation score of *Plgf*^{-/-} and *Plgf*^{+/+} mice following HDM exposure; $n = 7-10$ mice per group. ** $P < 0.01$ by Mann Whitney U test. Data are presented as mean \pm SEM. Results are from 2 independent experiments.

allergen sensitization, and this effect was more pronounced after airway exposure to HDM (Figure 1, D and E). These data indicate that, in addition to augmenting AHR, PIGF also increased allergen-mediated B cell responses.

We next tested if, beside its impact on sensitization, PIGF would directly contribute to the effector phase by pharmacological blockade of PIGF during allergen challenge. *Plgf*^{+/+} mice were injected with a PIGF-neutralizing Ab (α PIGF) during i.t. exposure to HDM (Figure 1A). *Plgf*^{+/+} mice injected with α PIGF had significantly diminished R as compared with control *Plgf*^{+/+} animals (7.1 ± 0.82 cm H₂O \times s/ml vs. 12.4 ± 2.9 cm H₂O \times s/ml) (Figure 1C). Thus, pharmacological neutralization of PIGF in *Plgf*^{+/+} mice during allergen challenge reduced AHR to the same degree as seen in mice with genetic deficiency of PIGF (Figure 1C). These findings suggest that PIGF affects AHR, independent of its role in promoting allergic sensitization.

Plgf deficiency results in reduction in airway eosinophilia and mucus production. Next, we assessed the impact of PIGF deficiency on other classic features of asthma, like inflammation, mucus production smooth muscle changes, and Th2 cytokines. In HDM-challenged *Plgf*^{-/-} mice, there was reduced inflammatory cell infiltration in the peribronchial and perivascular regions and reduced smooth muscle proliferation and goblet cell hyperplasia compared with HDM-challenged *Plgf*^{+/+} mice, where these changes were noticeably increased (Figure 2A). Saline-challenged *Plgf*^{-/-} or *Plgf*^{+/+} controls showed no such changes (Supplemental Figure 3). Asthma-related histological changes were graded for smooth muscle hypertrophy/hyperplasia, inflammatory cell infiltration, goblet cell hyperplasia, alveolar septal thickening, vascular thickening, peribronchiolar fibrosis, degree of airway constriction, and perivascular and peribronchial infiltrates, which confirmed a significantly blunted asthma histological score of the HDM-challenged *Plgf*^{-/-} mice compared with HDM-challenged *Plgf*^{+/+} mice (Figure 2B). The decreased mucus formation and a modest decrease in goblet cells in *Plgf*^{-/-} mice compared with *Plgf*^{+/+} mice

after HDM exposure was also reflected in lower *Muc5AC* (Figure 3A) and *Clca3* (Figure 3B) immunostaining of lung sections and a trend toward reduction in *Muc5AC* levels in BALF ($P < 0.06$, Supplemental Figure 4D). A clear reduction in goblet cell hyperplasia was observed in histology (Figure 2A), but Western blots for *Clca3* on whole-lung homogenates from *Plgf*^{+/+} and *Plgf*^{-/-} mice did not demonstrate significant changes in *Clca3* levels (Supplemental Figure 4, A-C), likely because combining all the cells in the lungs for protein analysis diluted the goblet cell effect. Overall, we observed a modest reduction in goblet cell hyperplasia and mucus formation in HDM-exposed *Plgf*-null animals.

Analysis of the bronchoalveolar lavage fluid (BALF) revealed that the reduction in cellular infiltration into the airways in HDM-exposed *Plgf*^{-/-} animals was primarily due to reduced eosinophil infiltration in the lungs (Figure 3C). However, levels of the eosinophil chemokines eotaxin-1/2 in BALF were not significantly different from *Plgf*^{+/+} animals ($P = 0.1$, Supplemental Figure 4E). We therefore examined if part of the reason for the reduced eosinophilia in BALF was due to decreased eosinophil production in the *Plgf*^{-/-} animals. Flow cytometry for blood eosinophils (CD11b⁺CD11c⁻SiglecF⁺ cells; Supplemental Figure 5A), in conjunction with leukocyte counts in *Plgf*^{+/+} and *Plgf*^{-/-} animals, were performed to determine absolute eosinophil numbers in blood. As anticipated, there was no difference in circulating eosinophil levels in saline-challenged controls of either genotype. However, the decrease in BALF eosinophil numbers in HDM-challenged *Plgf*^{-/-} mice (Figure 3C) was associated with a significant decrease in total circulating eosinophils (Figure 3D), suggesting that impaired recruitment by eotaxin-1/2 may not be the primary reason for reduced BALF eosinophils and that PIGF deficiency affected eosinophil production/recruitment from the BM.

Collectively, these data demonstrate that PIGF enhances allergen-induced eosinophilia in the blood and lungs, modestly affects mucus production, and significantly increases the inflammatory features associated with asthma.

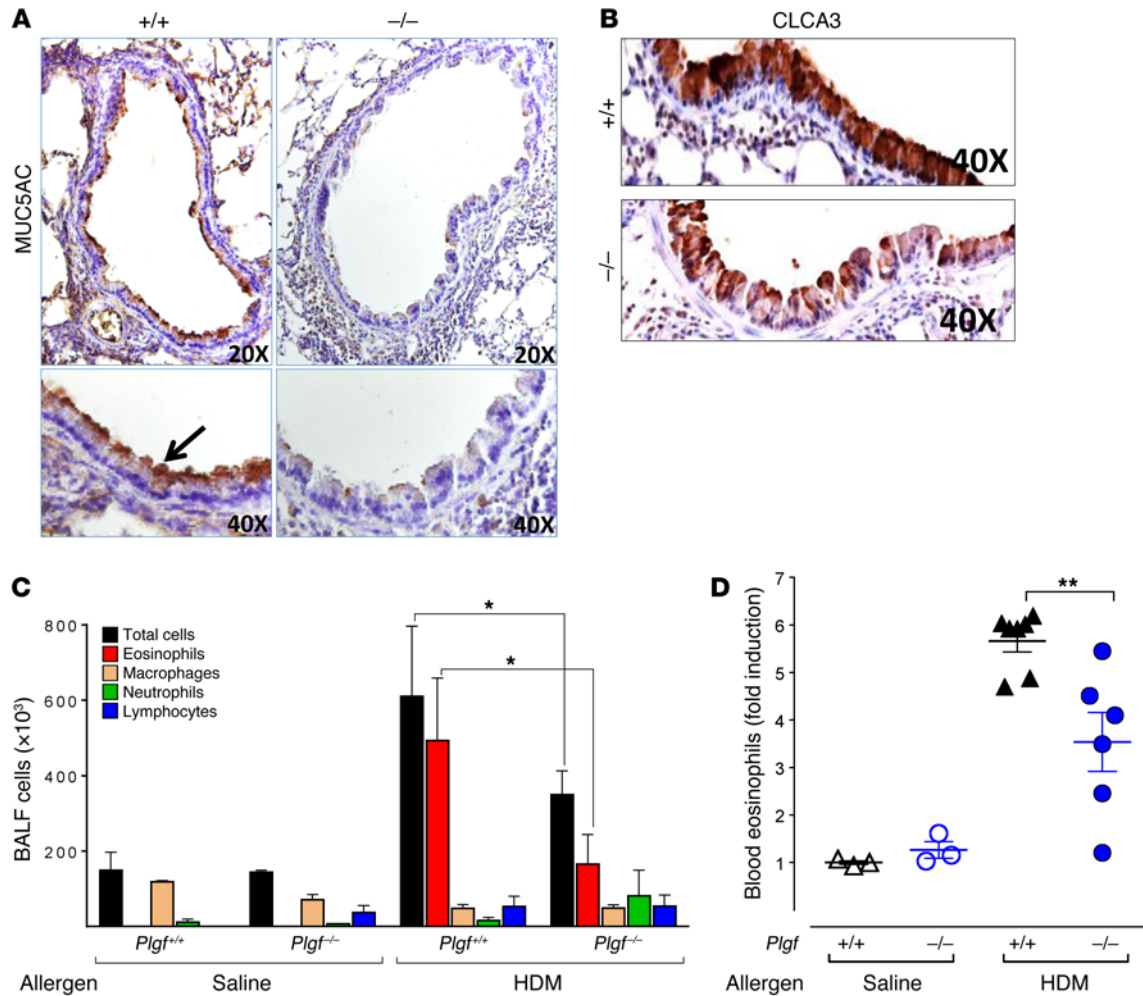


Figure 3. PIGF deficiency reduces goblet cell metaplasia and eosinophil recruitment. (A and B) MUC5AC staining ($\times 20$ and $\times 40$ images shown) (A) and CLCA3 ($\times 40$) staining (B) of representative lung sections of HDM-exposed $Plgf^{+/+}$ and $Plgf^{-/-}$ mice. (C) Differential cell counts in the BALF from saline- and HDM-exposed mice. $*P < 0.05$ by Mann Whitney U test; $n = 4$ –5 animals per group. (D) Fold increase in blood eosinophils counts of $Plgf^{+/+}$ and $Plgf^{-/-}$ mice following allergen exposure. $**P < 0.01$ by Mann Whitney U test; $n = 3$ animals in the saline-treated groups and 6–7 animals in the HDM-treated groups. All data are presented as mean \pm SEM. Results are representative of 1 experiment (C and D).

PIGF modestly augments the Th2 immune response. Analyses of Th2 cytokines in the BALF revealed significantly lower IL-13 levels in $Plgf^{-/-}$ mice (49.6 ± 16.3 pg/ml, $n = 22$) compared with $Plgf^{+/+}$ mice exposed to HDM (89.8 ± 16.8 pg/ml, $n = 26$; $P < 0.05$) (Figure 4A). Although the average IL-4 levels in $Plgf^{-/-}$ mice were not statistically different from those of $Plgf^{+/+}$ mice ($P = 0.1$), the median IL-4 levels in $Plgf^{-/-}$ mice (18.7 pg/ml; $n = 22$) were nearly half of those seen in $Plgf^{+/+}$ mice (33.2 pg/ml; $n = 26$) after HDM exposure (Figure 4B). No significant change was seen in IL-5 levels (Figure 4C) and, as noted earlier, there was a trend toward reduced eotaxin levels in HDM-exposed $Plgf^{-/-}$ mice, albeit not statistically significantly (Supplemental Figure 4E). Additionally, no differences were observed in IFN- γ , IL-1 β , MCP-1, IL-10, and IL-17A levels between $Plgf^{-/-}$ and $Plgf^{+/+}$ mice (Supplemental Figure 6). Further characterization of lung immune cells revealed that, although allergen exposure substantially increased (lung Th2 lymphocytes and DCs, as was expected, no noticeable difference in these cell populations was seen between $Plgf^{+/+}$ and $Plgf^{-/-}$ mice (Supplemental Figure 7). Taken together, these data suggest that PIGF increases Th2

immune response via IL-13 signaling—but this effect is modest at best—and that PIGF may be utilizing another pathway to exacerbate allergen-mediated pulmonary inflammation and AHR.

Allergen exposure induces PIGF in a STAT6-dependent manner. Interestingly, we noted that plasma PIGF levels were upregulated by several-fold in HDM-exposed $Plgf^{+/+}$ mice compared with saline-exposed $Plgf^{+/+}$ mice (Figure 5A). It has been reported that PIGF expression is restricted to lung macrophages and epithelial cells during murine (32) and human (33) lung development but is negligible postnatally at steady state (34, 35). Since PIGF modestly increased the Th2 cytokine responses, we tested the involvement of IL-13 and IL-4 signaling in allergen-mediated PIGF upregulation. STAT6 is a known downstream transcriptional effector of canonical IL-13 and IL-4 signaling. An *in silico* analysis of the PIGF gene promoter showed presence of several STAT6 consensus sequences (Table 1). We therefore hypothesized that Th2 cytokine signaling reactivates PIGF expression postnatally in lungs. We determined $Plgf$ mRNA expression in the lungs of HDM- or saline-exposed $Stat6^{-/-}$ mice. Like the $Plgf^{-/-}$ mice, the $Stat6^{-/-}$ and WT

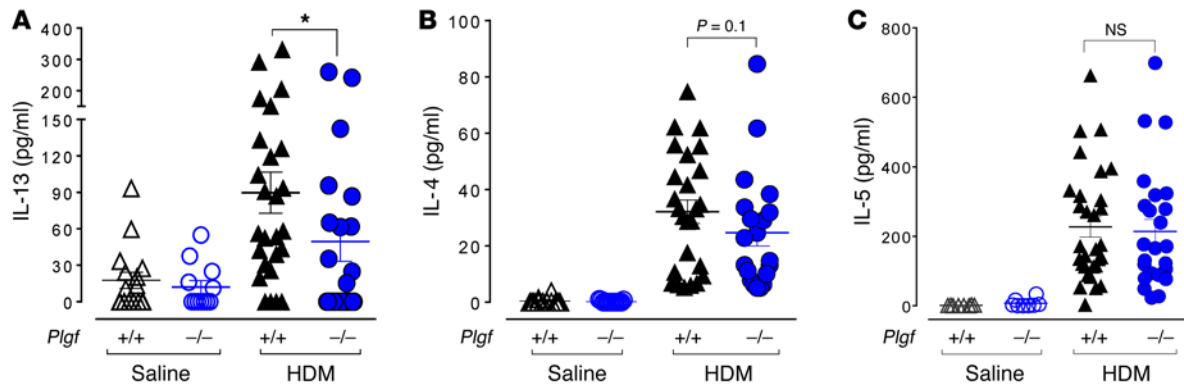


Figure 4. PIGF mildly affects IL-13 BALF levels. (A–C) IL-13, IL-4, and IL-5 levels in the BALF of *Plgf*^{+/+} and *Plgf*^{-/-} mice 48 hours following the last allergen challenge. **P* < 0.05 using Mann Whitney *U* test between *Plgf*^{+/+} and *Plgf*^{-/-} groups of mice. Each symbol represents 1 mouse; mean ± SEM of IL-13, IL-5, and IL-4 levels are indicated by the horizontal line and error bars. Results are from 3 independent experiments.

mice were also on a BALB/c background. *Plgf* mRNA expression was not upregulated in *Stat6*^{-/-} mice exposed to HDM, in contrast to WT BALB/c mice exposed to HDM (Figure 5B). IHC showed minimal PIGF protein expression in the lungs of *Stat6*-deficient mice (Figure 5C). In contrast, IHC revealed that lung airway and alveolar epithelial cells produced PIGF in WT mice after allergen exposure (Figure 5C). PIGF was minimally expressed by a few inflammatory cells/alveolar macrophages in *Stat6*^{-/-} mice, in stark contrast to the high PIGF expression in epithelial cells, inflammatory cells, and alveolar macrophages observed in WT mice (Figure 5C). We sorted alveolar macrophages and eosinophils from lungs of allergen-challenged *Plgf*^{+/+} and *Plgf*^{-/-} mice using flow cytometry (Supplemental Figure 5B) and performed quantitative PCR (qPCR) on RNA from these cell populations. BM (which contains erythroid cells, known to produce PIGF) was used as a control. Interestingly, while increased PIGF expression was seen in isolated alveolar macrophages, lung eosinophils also expressed high levels of PIGF in HDM-exposed *Plgf*^{+/+} mice (Supplemental Figure 8A). *Plgf*^{-/-} mice had no detectable staining and did not show PIGF expression by qPCR on mRNA from any of the cell

types examined, as expected (Figure 5C and Supplemental Figure 8A). Hence, we show that PIGF can be expressed by respiratory epithelial cells, alveolar macrophages, and eosinophils following allergen challenge via STAT6 activation, suggesting a positive feedback loop between the Th2 response and PIGF.

Plgf-deficient mice have reduced activation of the leukotriene pathway. We have recently shown that PIGF induces expression of HIF-1 α and Egr-1 transcription factors to mediate an increase in *FLAP* and *Alox5* mRNA (key players in the leukotriene [LT] pathway), respectively, from human lung endothelial cells and monocytes in vitro (36, 37). Therefore, we investigated whether

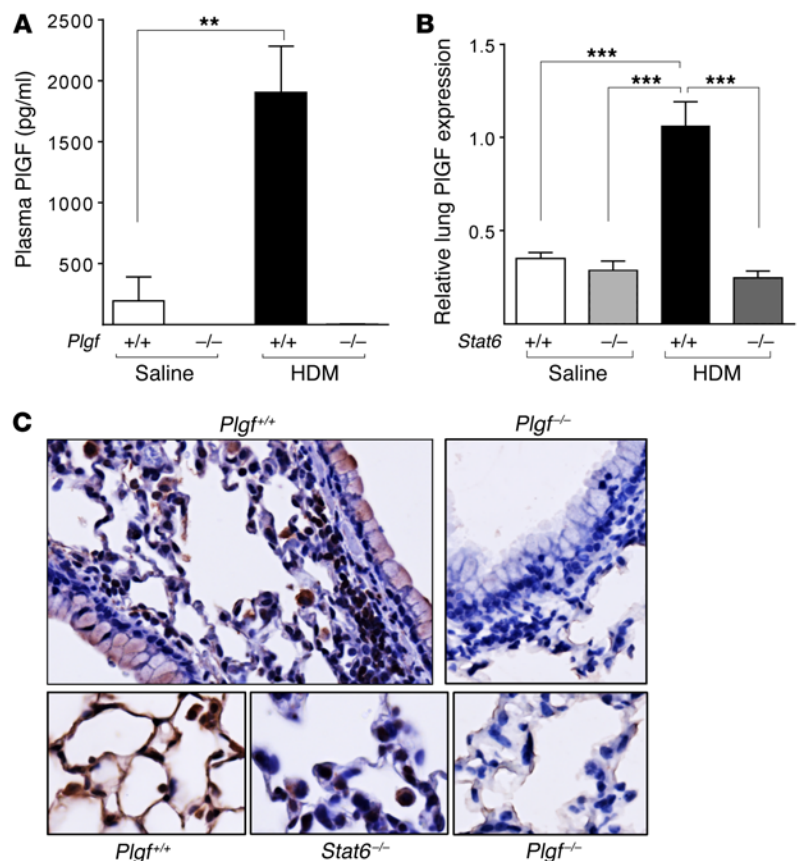


Figure 5. STAT6 mediates IL-13-induced increases in PIGF production. (A) HDM sensitization further increases PIGF production in *Plgf*^{+/+} mice compared with control (saline-treated) mice; *n* = 3 animals in the saline-treated group and 5–9 animals in the HDM-treated group. ***P* < 0.01 by Mann-Whitney test. (B) Relative *Plgf* mRNA expression in the lungs of *Stat6*^{+/+} and *Stat6*^{-/-} mice after HDM or saline exposure. ****P* < 0.001 by Mann-Whitney *U* test; *n* = 6–8 mice per group. (C) Expression of PIGF protein in airway, alveolar epithelial cells, and alveolar macrophages in WT mice (top left panel), as compared with *Plgf*^{-/-} mice (top right panel); $\times 20$ images. A magnified view ($\times 40$) showing increased PIGF expression in alveolar epithelial cells and macrophages in WT mice following Th2-driven STAT6 activation (bottom left panel), compared with PIGF expression in *Stat6*^{-/-} (bottom middle panel) and *Plgf*^{-/-} (bottom right panel) alveolar epithelial cells and macrophages. All data are presented as mean ± SEM. Results are representative of 2 independent experiments.

Table 1. In silico analysis of the mouse PIGF locus showing putative STAT6 binding sites

Sites	Sequences	Genomic location from the TSS
TAT6_1	TAAATATTCAGAGGAAAATACA (-)	-38381 -38363
STAT6_2	CTGGGATTCCTGGGAAGACAGA (-)	-27891 -27873
STAT6_3	GCTGACTTCCTAGCAAACCTCTG	-27890 -27872
STAT6_4	ACCTTTTCCCTTGAATAAGGTA	-25707 -25689
STAT6_5	GAGTTCCTCCATGAAATCCGGAG	-21433 -21415
STAT6_6	GTGTGGATTCAGGGAATTCCTC (-)	-16549 -16531
STAT6_7	TTCACGTTCCCTCAGAACACGGCC	-9640 -9622
STAT6_8	ATAATTCCTCCGGAAGGTGGG (-)	-9639 -9621
STAT6_9	GGCAATGTCAGGGAACCCAG (-)	-8407 -8389
STAT6_10	TTCAAATTCCTCAGGAAAGCAG (-)	-5640 -5622
STAT6_11	GATTAGATTCATGAACTGGAG (-)	+21558 +21576
STAT6_12	CCCCGTTCCCAAGCACTGTC	+24211 +24229

STAT6 binding elements are highlighted. Parentheses indicate the DNA strand; TSS, transcription start site.

PIGF also exacerbated AHR via activation of the LT pathway in vivo in *Plgf*^{-/-} and *Plgf*^{+/+} mice.

Allergen-exposed PIGF-deficient mice have nearly half the *Alox5* mRNA expression compared with their WT counterparts. Control (saline-exposed) animals showed no difference in *Alox5* mRNA levels (Figure 6A). Surprisingly, no difference in *Flap* mRNA levels were observed in the lung tissue between *Plgf*^{+/+} and *Plgf*^{-/-} mice (Supplemental Figure 8B), unlike our in vitro findings in human endothelial cells (37). The transcriptional increase in *Alox5* was also confirmed at the protein level, as IHC revealed markedly decreased staining for 5-LO in lung endothelial cells and alveolar macrophages of HDM-exposed *Plgf*^{-/-} mice versus that of *Plgf*^{+/+} mice (Figure 6B). Consequently, urinary CysLTs, the end products of the LT pathway, were significantly reduced in *Plgf*^{-/-} mice exposed to HDM (Figure 6C). In addition, *Plgf*^{+/+} mice exposed to allergen also had significantly higher CysLT receptor-1 (CysLTR1) expression in lungs than their *Plgf*^{-/-} counterparts (Figure 6D). Moreover, pharmacological inhibition of 5-LO activity with zileuton mirrored the reduction in AHR severity observed in anti-PIGF-treated *Plgf*^{+/+} mice (Supplemental Figure 9). Taken together, a loss-of-function analysis suggests that the PIGF mediates its pulmonary effects via the LT pathway.

To confirm the results from loss-of-function studies, we performed a gain-of-function experiment. HDM-exposed *Plgf*^{-/-} mice were also given a CysLT cocktail i.t. and compared with vehicle-treated HDM-challenged *Plgf*^{+/+} controls (Supplemental Figure 10A). Unfortunately, after this dual treatment of HDM and CysLT, which involved repeated i.t. instillations, mice were too bronchoconstricted to get accurate AHR measurements. However, we were able to perform lung histology and blood flow cytometry for eosinophils after the HDM and CysLT exposures. CysLT treatment strikingly rescued the *Plgf*^{-/-} null phenotype, as the asthma histology grading (performed by a pathologist blinded to the experimental treatment and mouse genotype) was now similar or even higher than that seen in HDM-challenged WT mice (Supplemental Figure 10, B–D). Furthermore, blood eosinophils

were significantly increased in allergen-exposed *Plgf*^{-/-} mice given i.t. CysLT compared with allergen-exposed *Plgf*^{-/-} mice treated with vehicle control (Supplemental Figure 10E). CysLT have been reported to induce eosinophil production and blood and airway eosinophilia in mice and humans (38–40), which is abolished by blockade of CysLTR1 (40).

Taken together, our data suggests that, at least in the BALB/c strain, PIGF mediates increased blood and lung eosinophilia via increased eosinophil production and recruitment from BM, and this effect is mediated via both increased CysLT production and upregulation of CysLTR1. Collectively, we show that PIGF contributes to the upregulation of the production of both the ligand (CysLT) and receptor (CysLTR1) expression in the LT pathway to accentuate the allergen-induced AHR in mice.

PIGF and its downstream target gene expression is increased in nasal respiratory epithelial cells of patients with asthma. Since PIGF expression was highly upregulated by IL-13-mediated STAT6 activation, we wanted to determine the expression of PIGF in a well-characterized cohort of patients with and without asthma (41). RNA was extracted from nasal airway epithelial cells of patients that either had (i) no history of asthma and were confirmed to be nonatopic by skin tests to common allergens (normal controls) or (ii) asthma patients with a clinical history of asthma and a positive skin test to one of the common allergens. The details of the eligibility criteria and methodology of gene expression analysis have been previously described in detail (41). Expression of *PLGF* was significantly higher in patients with asthma compared with normal controls in nasal airway epithelial cells (Figure 7A). In addition, expression of the downstream target transcription factors that are upregulated by PIGF, *Egr-1*, and *HIF-1α* (36, 37) were increased in patients with asthma, as was the expression of *Alox5*, *FLAP*, and *CYSLTR1* (Figure 7B). Although the expression of *Alox5*, *FLAP*, and *CYSLTR1* could result from allergen-induced asthma and not be specific to PIGF, these data confirm our prior studies on PIGF and the murine studies performed herein on PIGF-deficient animals. Moreover, we have previously reported that PIGF upregulates endothelin-1 expression in the lung and increases *EGRI* transcription (26, 27, 42); this data set also showed significantly increased endothelin-1 and *EGRI* expression in respiratory epithelial cells, a further validation that the PIGF signaling pathway is activated in asthma. In experimental models of asthma, the LT pathway and Th2 cytokines are known to potentiate each other (43–46). Our data suggests that PIGF may be the novel link that connects these 2 pathways.

PIGF is critical for allergen-induced AHR in sickle mice. Of all hematopoietic cells, PIGF is elaborated from erythroid cells (26, 47). Due to the expanded erythropoiesis, hypoxia, and erythropoietin in SCD, blood PIGF levels are increased (26, 48). Similar to patients, mice with SCD have naturally elevated levels of circulating PIGF that secreted from the hyperplastic erythroblasts (27). The prevalence of AHR is also high in patients with SCD (5–9). We therefore sought to determine whether (i) PIGF is the molecule that results in AHR in SCD and (ii) AHR was solely driven by sickle erythropoiesis.

To this end, we utilized the well-established Berkeley mouse model of SCD. Heritable components are known determinants of the susceptibility to allergen-induced AHR in different mouse

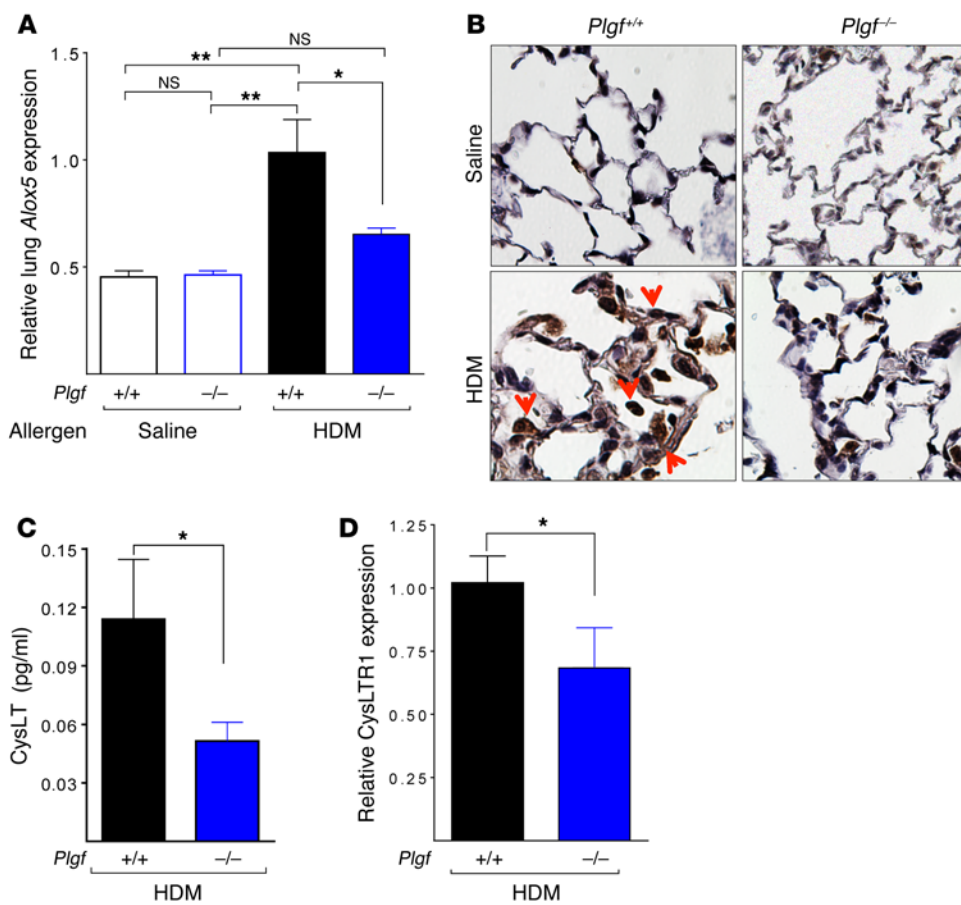


Figure 6. PIGF activates the LT pathway. (A) The relative *Alox5* mRNA expression in the lungs of *Plgf*^{+/+} and *Plgf*^{-/-} BALB/c mice 48 hours after the last i.t. HDM exposure. **P* < 0.05, ***P* < 0.01 by ANOVA (Bonferroni). (B) IHC showing 5-LO staining in lungs of saline and HDM-exposed *Plgf*^{+/+} and *Plgf*^{-/-} BALB/c mice; magnification ×50. (C) CysLT levels in *Plgf*^{+/+} and *Plgf*^{-/-} BALB/c mice measured in urine collected 24 hours after the last HDM exposure. (D) *Cysltr1* mRNA expression in the lungs of HDM-exposed *Plgf*^{+/+} and *Plgf*^{-/-} BALB/c mice. **P* < 0.05 by Mann Whitney *U* test. All data are presented as mean ± SEM. Results are representative of 1 experiment (A, B, and D) and from 2 independent experiments (C).

strains (30, 49, 50), and the HbS mice are relatively outbred; they are originally derived from a mixture of 5 parental strains (28, 51), and in this mixed background, unidentified heritable loci prevent AHR development (Supplemental Figure 12, A and B). Therefore, we utilized a BM transplant approach to generate mice that were completely chimeric for sickle hematopoiesis on a homogeneous-mouse genetic background. The predominant strain in HbS mice is C57BL/6, and therefore HbS BM was transplanted into C57BL/6 mice (Figure 8A). This approach allowed us to test whether sickle erythroid cells/rbc (erythropoietic cells) resulted in AHR and also allowed studies on numerous age-matched chimeric HbS mice concurrently, which were not otherwise possible with the fragile and difficult-to-breed HbS mice. Sickle BM cells from HbS mice (that were screened to express the CD45.2⁺ isoform on their leukocytes) were transplanted into lethally irradiated WT C57BL/6 ByJ (BL/6; CD45.1⁺) mice (Figure 8A). BM from WT C57BL/6 (BL/6; CD45.2) mice transplanted into congenic C57BL/6 ByJ mice (CD45.1 on the same BL/6 background) served as controls. We confirmed that HbS/WT mice were fully chimeric for donor-derived sickle or normal hematopoiesis that completely replaced the normal recipient hematopoiesis in the blood and the lungs of recipient mice. Sixteen weeks after transplantation, full reconstitution of the recipient hematopoietic system by the donor hematopoietic cells was confirmed by flow cytometry for the exclusive presence of donor leukocytes (CD45.2) in the lung and human sickle hemoglobin in the blood (Supplemental Figure 11, A and B).

Chimeric HbS-BL/6 mice (Chi-HbS mice) developed hematological parameters characteristic of SCD: anemia, reticulocytosis, and leukocytosis (Supplemental Figure 11C). Like the native HbS mice (27), Chi-HbS mice developed elevated PIGF levels compared with chimeric BL/6 mice (Chi-BL/6; Figure 8B), confirming that sickle erythroid cells resulted in elevated PIGF in SCD. We next determined whether the transplanted mice, especially the Chi-HbS mice, were able to mount a robust Th2 response, and indeed, they exhibited classic features of allergen-induced Th2 response, including the induction of Th2 cytokines and the expansion of Th2 lymphocytes in the lung (Figure 8, C-F, and Supplemental Figure 13, A-F).

Next, we exposed Chi-HbS mice to HDM and determined HDM-specific B cell responses and airway reactivity: Both Chi-BL/6 and Chi-HbS mice were able to mount allergen-specific B cell responses. HDM-specific IgE trended higher in HDM-exposed Chi-HbS mice compared with Chi-BL/6 controls, albeit not statistically significantly (*P* = 0.1; Supplemental Figure 14C).

After HDM airway exposure, Chi-HbS mice developed more severe AHR than their corresponding Chi-BL/6 controls exposed to HDM (Figure 9A). Notably, increased AHR was present in Chi-HbS mice, even at baseline, without exposure to methacholine (Figure 9A). However, this was not due to a higher Th2 response in these Chi-HbS mice: Chi-BL/6 and Chi-HbS mice had very similar Th2 cytokine levels in saline- and allergen-exposed animals. IL-13 levels trended lower in Chi-HbS mice (*P* = 0.06) but were not significantly different. Notably, the number of lung DCs and Th2

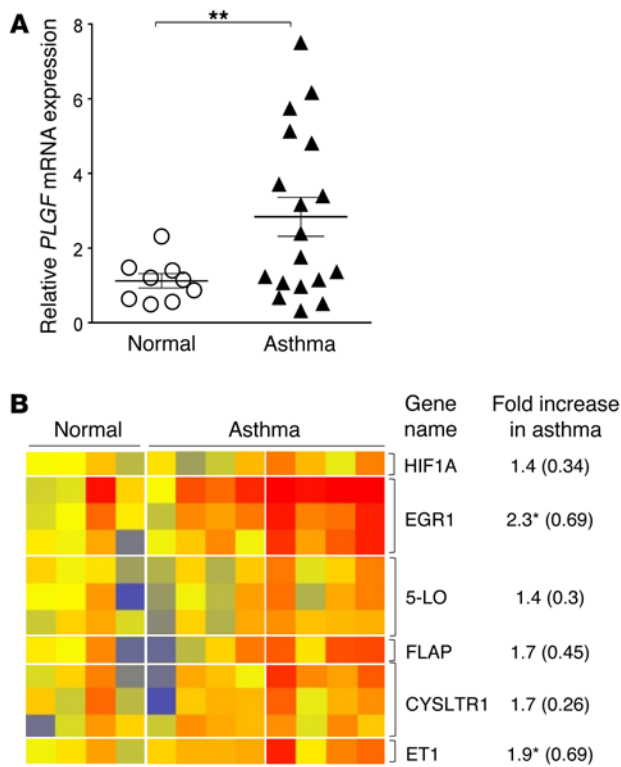


Figure 7. Expression of PLGF mRNA and its downstream target genes is increased in respiratory epithelial cells of patients with asthma. (A) Relative quantification of PLGF mRNA expression in nasal epithelial cells of human subjects with no asthma ($n = 9$) and those with asthma ($n = 18$). $***P < 0.01$ by Mann Whitney U test. All data are presented as mean \pm SEM. (B) Heat map of PIGF pathway genes in the microarray profile of some of the subjects shown in A ($n = 4$ normal, and $n = 8$ asthmatic). The normalized expression intensity is indicated by the color code: low (blue), medium (yellow to orange), and high (red). $*P < 0.05$ by unpaired t test. The fold increase is shown as mean \pm SEM in parenthesis. Results are from of 2 experiments (A) and 1 experiment (B).

lymphocytes were also similar between Chi-BL/6 and Chi-HbS mice (Supplemental Figure 13, A-F, and Supplemental Figure 14, A and B), excluding the possibility that Chi-HbS mice have an intrinsically skewed Th2 immune response favoring allergic responses.

Nonetheless, the exaggerated AHR in Chi-HbS mice compared with Chi-BL/6 mice was mediated by PLGF, since treatment of HDM-exposed Chi-HbS mice with α PLGF blocked the airway reactivity to levels seen in vehicle-treated Chi-HbS mice and vehicle-treated Chi-BL/6 mice (Figure 9B). These data highlight the critical role of PLGF in AHR in SCD and suggest a mechanism of action other than the classic allergic Th2 pathway.

PLGF mediates AHR in HbS sickle mice through a LT-dependent pathway. Chi-HbS mice had higher PLGF levels in circulation, as expected, due to a markedly expanded sickle erythropoiesis, which increases 5-LO and CysLTR1 expression. We found that zileuton treatment reduced AHR in HDM-exposed Chi-HbS mice to levels comparable to α PLGF-treated Chi-HbS mice or vehicle-treated Chi-HbS controls (Figure 9B). This was accompanied with a marked reduction in urinary CysLTs (Figure 9C), more so with zileuton than with α PLGF. It was noteworthy that, similar to BALB/c *Plgf*^{+/+} mice, Chi-HbS mice showed increased LT production when compared with Chi-BL/6 mice exposed to allergen (Figure 9C). In both animal models, blocking PLGF function by an Ab or blocking LT production by zileuton resulted in reduced AHR (Figure 9B).

Since zileuton had a greater effect than PLGF Ab, in addition to 5-LO, we also evaluated expression of LTC₄ synthase (*Ltc4s*), a key CysLT synthetic enzyme downstream of 5-LO. There was enhanced expression of *Ltc4s* in non-allergen-exposed Chi-HbS mice compared with Chi-BL/6 controls, which explains the AHR in Chi-HbS mice at baseline. The expression of *Ltc4s* increased further after allergen challenge in Chi-HbS mice (Supplemental Figure

15A), but no such effect was seen in Chi-BL/6 mice, suggesting that this was a sickle-specific effect. Remarkably, blockade of PLGF with a PLGF-neutralizing mAb significantly reduced *Ltc4s* expression in HDM-challenged Chi-HbS to the level of AHR seen in allergen/saline-treated Chi-BL/6 mice, suggesting LTC4S is also regulated by PLGF (Supplemental Figure 15A). We also studied *Ltc4s* gene expression in PLGF-deficient and WT mice. Mean *Ltc4s* expression trended lower in saline-treated or HDM-challenged *Plgf*^{-/-} mice compared with WT mice (Supplemental Figure 15B). Our data suggests that there may be PLGF-dependent regulation of LTC4S (Figure 10) and the greater effect of zileuton in lowering CysLT levels in Chi-HbS mice is a PLGF-independent effect. Collectively, our data demonstrate that PLGF enhances allergen-induced AHR in sickle mice through 5-LO- and CysLTR1-mediated LT production.

Discussion

Using genetic and pharmacological approaches, we show a distinct and significant exacerbation of AHR by PLGF. This effect occurs primarily via its upregulation of 5-LO and LT production and, to a lesser extent, upregulation of IL-13-mediated Th2 response, which further upregulates PLGF production from lung epithelial cells, eosinophils, and alveolar macrophages. Indeed, respiratory epithelial cells from patients with asthma showed significantly increased *Plgf* mRNA and an increase expression of PLGF target genes. Since PLGF is also an erythroid cell-derived factor that is increased in SCD, we transplanted sickle hematopoiesis into WT mice and showed that the high AHR is mediated through sickle erythroid cell-induced high PLGF and is therefore transplantable and completely abrogated by either inhibiting PLGF or the LT pathway.

Our results contrast to a previous report, which suggested that PLGF has no pathogenic effect on AHR in ovalbumin allergen-induced experimental AHR (52). This apparent discrepancy may be due to differences in allergens and mouse strains. The activity of specific pathways required for AHR severity has been shown to be mouse strain dependent (30, 49). Given that HDM inhalation is more relevant to human pathology, our finding of the pathogenic role of PLGF in the context of HDM-induced AHR is clinically relevant to human disease. Our data support and extend the prior work by Pritchard et al., who showed that chimeric sickle mice have baseline lung pathology characterized by increased R (53). In agreement with their study, we showed that sickle mice have an increased R at baseline, in the absence of the bronchoconstrictor challenge with methacholine. Our study further demonstrates the mechanism of increased AHR in SCD is via CysLT induction, as abrogation of the augmented AHR occurred by α PLGF or zileu-

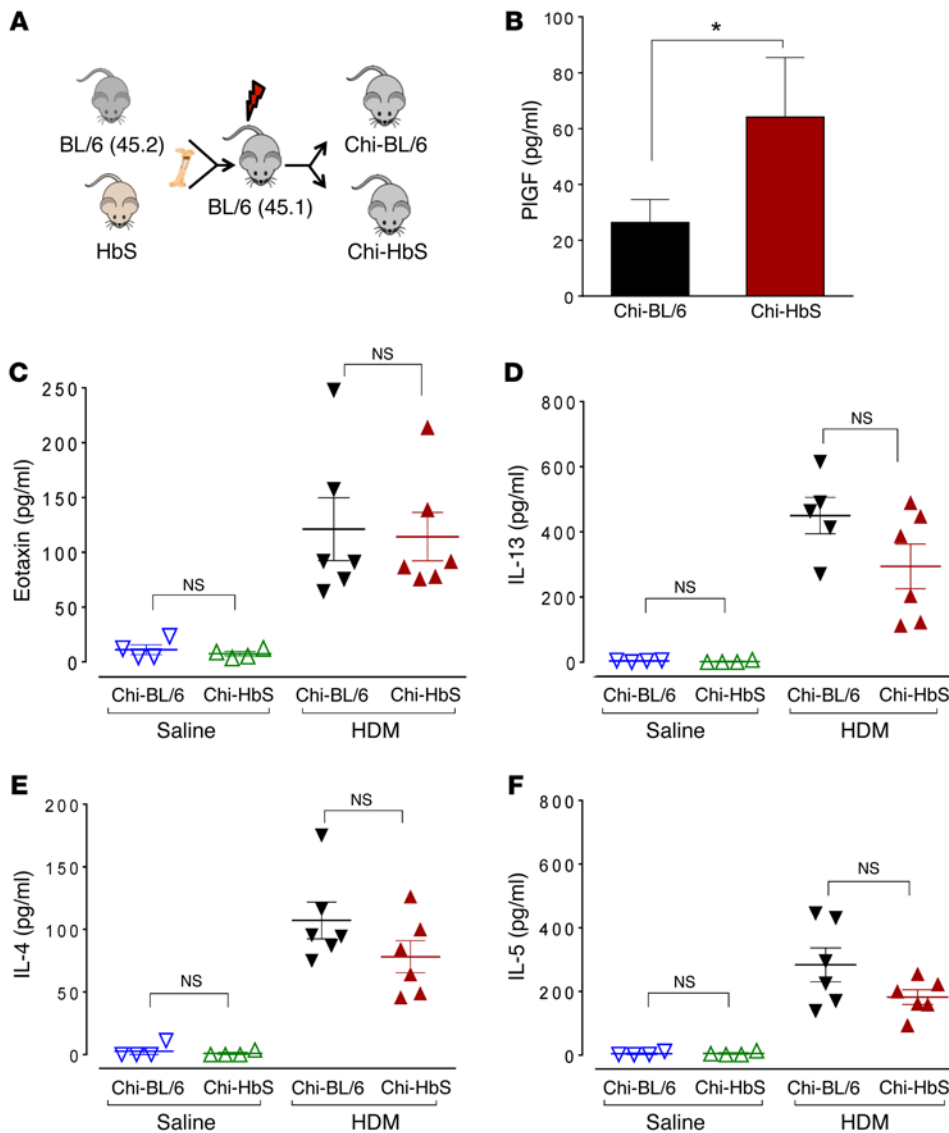


Figure 8. PIGF and cytokine levels in chimeric SCD mice. (A) Experimental schema showing generation of chimeric HbS (Chi-HbS) and BL/6 (Chi-BL/6) mice by BM transplantation. (B) Plasma PIGF levels of HDM- and saline-exposed Chi-HbS and Chi-BL/6 mice. * $P < 0.05$ by Mann Whitney U test; $n = 17$ – 19 animals per group. (C–F) Eotaxin, IL-13, IL-4, and IL-5 levels in the BALF of saline- and HDM-exposed chimeric mice. All data are presented as mean \pm SEM; each symbol represents 1 mouse. Results are from 3 independent experiments (B) or representative of 1 experiment (C and D).

ton. Since Th2 responses are unchanged in chimeric sickle mice compared with controls, some innate effector cells stimulated by sickle hematopoiesis may also contribute to the production of CysLT. While we have shown that PIGF induces 5-LO to generate LTs, pulmonary expression of *Ltc4s* was substantially increased in Chi-HbS at baseline and further induced after HDM challenge, a phenomenon not seen in Chi-BL/6 mice. Moreover, the ability of PIGF Ab to lower *Ltc4s* levels in HDM-exposed Chi-HbS mice indicates some form of PIGF-dependent regulation of *Ltc4s* surge at baseline and during allergen challenge. These data suggest that this phenomenon may be specific to sickle hematopoietic cell-secreted PIGF. While *Ltc4s* induction is achieved through direct regulation by sickle hematopoiesis-induced PIGF, an innate cell may also contribute to the increased AHR and affect CysLT levels in sickle mice; the particular cell type or pathway affected is an exciting new area for exploration, and future studies will be necessary to dissect these complexities of PIGF-dependent and -independent effects in asthma and in AHR in SCD.

In BALB/c mice, although PIGF enhanced the allergen-induced AHR severity, its expression was not necessary for AHR

initiation, since AHR developed in HDM-exposed *Plgf*^{-/-} mice. However, here AHR was significantly blunted compared with HDM-challenged *Plgf*^{+/+} mice. Zileuton had a much greater effect than α PIGF in reducing CysLT production in Chi-HbS mice. This is not surprising, since HDM can mediate LT production via pathways other than PIGF (54). Whether another pathway besides the ones identified herein plays a role in increasing CysLT production in SCD mice remains to be investigated.

Interestingly, PIGF significantly augmented allergen-specific IgE production even during i.p. sensitization. AHR- and allergen-mediated IgE responses have been reported to be significantly blunted in *Alox5*-deficient mice (55, 56).

The same phenotype in PIGF-deficient mice suggests that PIGF is an upstream activator of 5-LO. Besides augmenting the LT pathway, we observed that levels of the Th2 cytokine IL-13 were also significantly more exaggerated in HDM-exposed *Plgf*^{+/+} mice compared with *Plgf*^{-/-} mice. IL-13 has been shown to upregulate CysLT receptor expression (43, 44); conversely, there are also reports of CysLT-mediated increased Th2 response and eosinophilic infiltration in the lung (23, 57). Indeed, CysLTR1 expression was significantly lower in *Plgf*^{-/-} mice. CysLT are also known potent contractile agonists of the airway smooth muscle cells (58) and vascular mural cells (59). Together, these interconnected LT and Th2 cytokine pathways are accentuated to increase AHR and inflammation in *Plgf*^{+/+} mice. IL-13 levels were not significantly different in HbS mice, suggesting that either IL-13 does not play a role in AHR in SCD or that this is a mouse strain-specific effect. Importantly, both models show the primary involvement of the LT pathway for AHR based on the results in *Plgf*^{-/-} mice, or in *Plgf*^{+/+} and HbS mice given α PIGF. Other studies have reported the development of CysLT-induced AHR in the presence of normal IL-13 induction (54, 55).

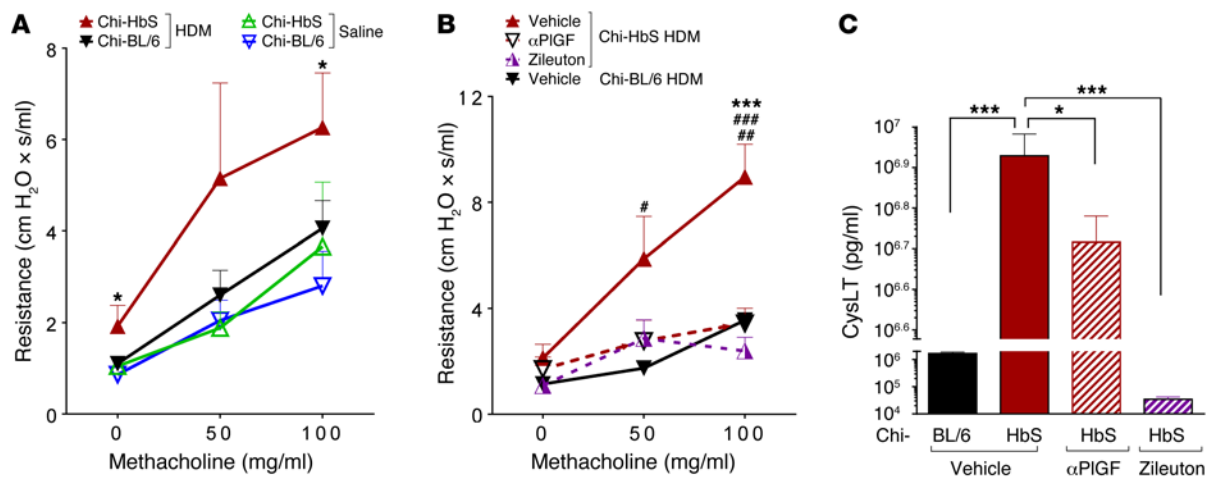


Figure 9. PI3K mediates AHR seen in SCD mice through a LT-dependent pathway. (A) Airway responsiveness to methacholine of saline- or HDM-exposed Chi-BL/6 and Chi-HbS mice. * $P < 0.05$, HDM-exposed Chi-BL/6 versus HDM-treated Chi-HbS group, 2-way ANOVA. (B) Airway responsiveness to methacholine of HDM-exposed Chi-BL/6 and Chi-HbS mice treated with vehicle control, α PIGF, or zileuton. *** $P < 0.001$, HDM-exposed Chi-HbS (vehicle) versus HDM-exposed Chi-HbS (α PIGF); *** $P < 0.001$, HDM-exposed Chi-HbS (vehicle) versus HDM-exposed Chi-HbS (zileuton); # $P < 0.01$, HDM-treated Chi-HbS (vehicle) versus Chi-BL/6 by 2-way ANOVA. $n = 6$ –8 animals per group. (C) Urine cysteinyl LTs of HDM-exposed Chi-BL/6 and Chi-HbS mice treated with vehicle control, α PIGF, or zileuton. * $P < 0.05$, *** $P < 0.001$ by 1-way ANOVA; $n = 5$ –6 animals per group. All data are presented as mean \pm SEM. Results are from 2 independent experiments.

Our data show that the LT signaling axis is interrupted in the absence of PI3K and is exaggerated in SCD, where PI3K concentrations are increased. Notably, zileuton had the same effect as α PIGF. Moreover, the PI3K-null mouse AHR phenotype was rescued to levels similar to *Plgf*^{+/+} mice by i.t. instillation of CysLT. Collectively, our data shows that the LT pathway was the primary downstream effector pathway of PI3K, with secondary activation of an IL-13-mediated T cell (Th2) and B cell (IgE) response. Taken together, this study provides novel mechanistic evidence of activation of both LT and Th2 pathways by PI3K.

In BALB/c mice, PI3K effect on Th2 cytokines was limited to IL-13, but not IL-4, IL-5, or eotaxin, the latter being the same despite high eosinophils. While there may have been a kinetic delay between the peak of eotaxin production in the lung (10 hours) following allergen exposure (60) and our sampling time (48 hours), IL-5- and IL-4-independent allergen-induced lung eosinophilia and airway hyperreactivity have been described in BALB/c mice (61) and asthma patients (62). More importantly, loss- and gain-of-function studies show that PI3K mediates AHR and blood and lung eosinophilia primarily via CysLT that are known to increase eosinophil production from BM and induce blood and airway eosinophilia in mice and in humans (38–40), and this effect is abolished by a blockade of CysLTR1 (40). Moreover, the IL-13-restricted effect of PI3K may suggest participation of PI3K in previously described IL-13-mediated IL-4/eotaxin-independent AHR (63), which is directed at augmenting the airway smooth muscle responsiveness (63, 64).

Another finding was that PI3K expression was further upregulated in the lung epithelial cells, eosinophils, and macrophages via a Th2-driven STAT6 induction, creating a positive feedback loop (shown schematically in Figure 10). The human PI3K promoter showed several putative STAT6 binding consensus sequences (Table 1). However, further studies are needed to determine if PI3K is a direct downstream target of STAT6. Regardless, induc-

tion of PI3K via a Th2 pathway and vice versa has not been previously reported and has much broader implications than SCD, since the Th2 response is classically upregulated in asthma. Indeed, interrogation of PI3K expression in respiratory epithelial cells in a well-characterized asthma and control cohort we have previously published (41) showed significantly increased *PLGF* mRNA expression in patients with asthma compared with controls. High PI3K levels in asthma patients were associated with the upregulation of expression of PI3K signaling partners and target genes we have previously identified or those identified herein: *EGRI*, *HIF1A*, endothelin-1 (*ET1*), and *Alox5* (36, 37, 42). PI3K is expressed largely in the placenta. We have previously shown that, in SCD, excessive expansion of the erythroid precursors, erythropoietin, and hypoxia drive the rise in erythroid cell-secreted PI3K (26, 48). While PI3K expression has been shown to be upregulated in lung cancer and a variety of other cancers (65, 66), its expression in the normal lung has only been documented during mouse and human lung development (33–35). Herein, we show that PI3K expression can be upregulated in the postnatal/adult lung alveolar macrophages/eosinophils and epithelial cells, as well as via allergen-mediated Th2 cytokines/STAT6 in experimentally induced asthma.

Transgenic mice that overexpress PI3K develop emphysema (35), an effect abrogated in elastase-treated *Plgf*^{-/-} mice (32). PI3K is elevated in patients with chronic obstructive pulmonary disease (COPD), where emphysema is a key component, and its levels were shown to be associated with higher pulmonary morbidity (67). Furthermore, high PI3K levels have been reported in the sputum of COPD patients with lower FEV1 (52, 67). However, its expression in normal adult (postnatal) pulmonary eosinophils, alveolar macrophages, and epithelial cells; its role in exacerbating AHR and asthma; and its mechanism of action were hitherto unexplored. To our knowledge, this is the first report showing a mechanism of increased AHR by PI3K in SCD that also explains its association with acute asthma, and conceivably in obstructive airway physiology in COPD.

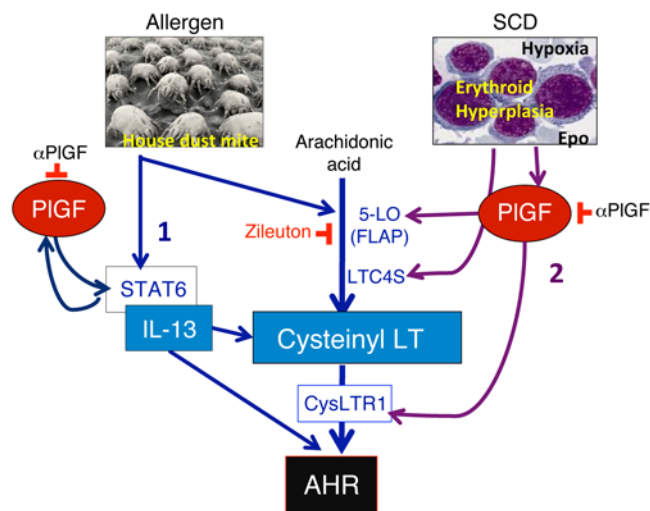


Figure 10. Schematic showing the mechanism of PIGF-induced AHR and the positive feedback loop between IL-13 and PIGF. PIGF is secreted by erythroid progenitors from the BM in response to hypoxia and erythropoietin (Epo) in SCD. PIGF stimulates the expression of 5-LO, which generates CysLT, and increases CysLTR1 expression. Sickle hematopoietic cells additionally increase LTC4S expression, which further contributes to CysLT generation. LT and IL-13 are key effectors of AHR. PIGF blockade or 5-LO inhibition reduces AHR. IL-13 levels activate its downstream effector molecule, STAT6, which in turn further augments PIGF production from pulmonary airway epithelial cells, eosinophils, and alveolar macrophages. The latter explains the elevated PIGF levels in allergen-challenged WT mice and in patients with asthma.

We have previously shown that PIGF contributes to the chronic inflammatory state in SCD via activation of monocytes and increased inflammatory cells (48, 68, 69). Indeed, SCD is characterized by increased blood leukocytes at baseline (70, 71), a major source of LTs in vivo. Targeting the LT pathway using α PIGF/zileuton may decrease both PIGF-dependent and PIGF-independent AHR and pulmonary morbidity in patients with SCD. Furthermore, LT plays a role in inflammation (58), a major player in SCD pathophysiology. Hence, LT-targeted therapy such as zileuton may provide benefits beyond the AHR lung disease spectrum in SCD.

Increased hemolysis triggers increased erythropoiesis and may be associated with increased PIGF production, priming the lung to AHR. Importantly, acute chest syndrome (ACS), a life-threatening complication of SCD, has been shown to be associated with asthma in children with SCD (72). However, ACS also occurs in a vast majority of SCD patients who do not have clinically diagnosed asthma. It is conceivable that individuals with high PIGF levels predisposed to ACS by increasing AHR in the absence of asthma, and here, pharmacological blockade of either PIGF or LT may help prevent this life-threatening complication of SCD. Pulmonary complications are important risk factors for the high morbidity in SCD (3, 4, 73); therefore, targeting PIGF or LT can improve the overall SCD outcome. We have previously reported elevated PIGF expression in β -thalassemia (26), another chronic hemolytic anemia disorder. It is possible PIGF may play a similar detrimental role in β -thalassemia that remains to be explored.

Interestingly, in SCD, the transition from childhood to adulthood is associated with a decline in the incidence of AHR (5, 6, 8, 9) and obstructive lung disease (74, 75) and an increase in restrictive lung disease. While asthma and AHR decline with age due to the increased size of the airways in adults, other factors — including transfusion hemosiderosis, vascular pruning, and pulmonary artery hypertension that develop in adults with SCD — may cause a profibrotic phenotype. More broadly, our studies show a distinct role of PIGF in asthma. Therefore, targeting PIGF may prove beneficial for asthma by blunting the Th2 and LT pathways and for other airway diseases featuring an AHR component, such as COPD and asthma.

In conclusion, we report an erythropoiesis-induced, PIGF-dependent IgE-IL-13-LT axis that contributes to increased AHR

in SCD, which in turn further upregulates PIGF production from lungs via Th2 cytokine upregulation. PIGF-exacerbated AHR can be pharmacologically targeted by the licensed 5-LO inhibitor, zileuton, or α PIGF, which is currently in clinical trials for cancer. Thus, this study provides an opportunity for targeting PIGF as an early clinical intervention to effectively reduce the pulmonary morbidity associated with SCD and asthma.

Methods

Supplemental Methods are available online with this article.

Animals. PIGF KO mice were obtained from Peter Carmeliet's laboratory (University of Leuven) and back-crossed for 10 generations into a BALB/c background at Cincinnati Children's Hospital; 10- to 14-week-old male and female $Plgf^{f/+}$ mice (also referred to as $Plgf^{f/+}$) with physiological PIGF expression were used for experimentation. *Hbamt1Paz Hbbtm1Tow* Tg (HBA-HBBs) 41Paz/J or HbS sickle mice were obtained from The Jackson Laboratory and were bred up to the sixth generation under C57BL/6NJ background. HbS sickle mice carry KO for the mouse α -globin and carry a transgene expressing the human β S-globin gene (28). C57BL/6NJ or B6.SJL-Ptprca Pepcb/BoyJ (BL/6; CD45.1 [C57BL/6ByJ]) mice were purchased from The Jackson Laboratory. Stat6 KO mice were provided by Gurjit Khurana Hershey's laboratory (CCHMC). The Stat6 KO mice were also in a BALB/c background. Chi-HbS were generated by transplanting whole BM from native HbS mice (that expressed CD45.2 on their leukocytes) into lethally irradiated B6.SJL-Ptprca Pepcb/BoyJ (C57BL/6ByJ; CD45.1) recipient mice in a 1:6 donor/recipient ratio. For the generation of control mice, whole BM from C57BL/6 (CD45.2) donor mice was transplanted into lethally irradiated C57BL/6ByJ (CD45.1) mice. Twelve weeks after transplantation, hemoglobin chimerism was assessed by HPLC. Lung mechanics were assessed at 16 weeks after transplantation, at which point, the recipient mice had full donor hematopoiesis. Lungs were dissociated and cells stained for CD45.1 and CD45.2 to determine donor leukocyte chimerism in lungs.

Experimental models of allergen-induced AHR. To study experimental AHR, we used the HDM extract as the allergen. For the HDM challenge regimen, mice were sensitized on days 0 and 7 with an i.p. dose of 10 μ g (100 μ l) of HDM (Greer) or with phosphate-buffered saline (saline controls); on days 14 and 19, mice were treated i.t. with 100 μ g (40 μ l) of HDM or with saline. On day 21 of the challenge, airway reactivity was tested, and thereafter, mice were euthanized.

Measurement of lung mechanics. AHR was studied in mice 48 hours after the last challenge, using 2 testing methods. For the airway pressure test, mice were anesthetized with sodium pentobarbital (65 mg/ml) and intubated. Respiration rate was maintained at approximately

120 breaths per minute with a constant tidal volume (0.2 ml), while mice were kept paralyzed with decamethonium bromide (25 mg/kg). After a stable baseline was achieved, acetylcholine (50 mg/kg) was injected into the inferior vena cava and dynamic airway pressure (cm H₂O × s) was monitored for 5 minutes. In addition, AHR was also measured in parallel experiments using an independent method: the forced oscillation technique, as described previously (76). Mice were anesthetized with a triple sedative solution (ketamine/zylaxine/acepromazine; 4:1:1) and connected to a computer-controlled small animal ventilator (flexiVent, SCIREQ) by intubation. R was assessed following delivery of nebulized saline and increasing doses of the broncho-constrictor agent methacholine (50 mg/ml and 100 mg/ml; acetyl-β-methylcholine chloride, Sigma-Aldrich). For each concentration of methacholine, the maximal R (Rs) values were averaged. Following studies on lung mechanics, blood, bronchoalveolar lavage fluid, and organs were collected for ELISA assays and pathology.

PlGF Ab and zileuton regimens. PlGF neutralizing Ab (PL5D11D4) was a gift from Bart Jonckx (ThromboGenics NV). The mouse monoclonal anti-PlGF Ab was developed against all mouse PlGF proteins (65). A dose of 50 mg/kg of PlGF-neutralizing Ab or saline was administered i.p. on days 14, 16, 17, 19, and 20 (relative to the day of the initial administration of HDM) to mice. In one experiment, *Plgf*^{+/+} animals challenged with HDM were given either mouse IgG1 (the isotype of α-PlGF) or saline i.p. to ensure there was no difference in pulmonary phenotype with either. Doses of 70 mg/kg or 150 mg/kg of zileuton (Zyflo CR) were delivered by gavage into mice 5 hours prior to the first i.t. administration of HDM and an hour after the first HDM challenge. Subsequently, mice received 70 mg/kg or 150 mg/kg (200 μl) of zileuton twice daily until the termination of the experiment on day 21. Zileuton was dissolved in a diluent solution: 10% DMSO in water. An equal volume of the diluent solution was given to control mice. For treatment of *Plgf*^{-/-} with CysLT, 1 μg of a HPLC-purified CysLT mixture (Cayman Chemical) was instilled daily over 3 days into the trachea of the animals from day 18–20 relative to the day of the initial administration of HDM. The CysLT was prepared by drying the stock of ethanol-diluted CysLT using a nitrogen gas tank, and the reduced powder was resuspended into sterile saline. Control *Plgf*^{+/+} and *Plgf*^{-/-} mice received sterile saline.

Asthma cohort analysis. Nasal respiratory epithelial cells from asthmatic and nonasthmatic subjects, younger than 18 years of age, were obtained. The selection criteria were described in detail before (41). Briefly, subjects included in the control group had (i) no acute infection or major illnesses and (ii) a negative result to the skin-prick test to a panel of environmental allergens. Subjects in the asthma group included both patients with (i) a physician diagnosis of asthma with no current wheezing episodes and (ii) a positive skin-prick test to environmental allergens.

Nasal epithelial brushings were found to contain 97% respiratory epithelial cells (41). RNA from 4 individuals in the nonasthma group and 8 individuals in the asthma cohort was obtained from these cells and sub-

jected to microarray analysis using the HG-U133A GeneChip (Affymetrix) (41). The expression profile was interrogated for PlGF and its target genes using GeneSpring software. Expression profiles were derived from a microarray database utilized in a previous publication (77).

In silico analysis of STAT6 binding sites. A search of putative STAT6 binding sites in the murine PlGF locus was performed using MatInspector software (Genomatix); a stringent cut-off allowing a single mismatch was applied. The 2011 mouse genome version GRCm38/mm10 Assembly (www.genome.ucsc.edu; University of California Santa Cruz, Santa Cruz, California, USA) was used for the analysis.

Statistics. The software GraphPad Prism was used for all statistical analyses. Statistical tests used include 1-way Dunnett's ANOVA, Sidak 2-way ANOVA, unpaired *t* test, and Mann-Whitney *U* test wherever applicable. Data are presented as mean ± SEM and *P* < 0.05 was considered significant.

Study approval. Animal protocols were approved by the Institutional Animal Care and Use Committee at CCHMC (IACUC Protocol numbers: 2E07051; 2D07050). For the human studies, patients were recruited after appropriate Institutional Review Board approval at CCHMC (IRB; protocol number 2008-1384). Written informed consent was obtained from all study participants or their guardians.

Author contributions

MSEMM, EBB, PIA, ST, AL, and DP conducted the experiments; MSEMM, PM, EBB, and GKKH designed research studies, MSEMM coordinated all research experiments; MSEMM and EBB plotted and analyzed the data; SKS performed the histopathological staining and interpretation; TR performed the IHC; ML performed the microarray and bioinformatics analysis; BJ provided α-PlGF Ab; PC generated and provided the placenta growth factor-deficient mice; VKK, TDLC, NR, MWK, GKKH, and PM provided intellectual input into the conduct and analysis of the experiments; MSEMM, EBB, GKKH, and PM analyzed and interpreted the data; PM conceived of the project; MSEMM and PM wrote the manuscript; and all authors read and edited the manuscript.

Acknowledgments

We would like to thank Katie Burke and Lanxi Song for their technical expertise and help with mouse experiments; Krista Dienger and Alyssa Sproles for their help with APTI experiments; Umasundari Sivaprasad for developing the Muc5AC ELISA in BALF samples; Anil Jegga for his help with the in silico promoter analysis; and Nihal Baker for the differential counts. This work was funded by RO1 HL079916 to P. Malik and RO1 HL11372 to P. Malik and V.K. Kalra.

Address correspondence to: Punam Malik, Division of Experimental Hematology/Cancer Biology, Cancer and Blood Diseases Institute, Cincinnati Children's Hospital Medical Center, 3333 Burnet Ave., MLC 7013, Cincinnati, Ohio 45229-3039, USA. Phone: 513.636.1333; E-mail: Punam.Malik@cchmc.org.

- Ingram VM. A specific chemical difference between the globins of normal human and sickle-cell anaemia haemoglobin. *Nature*. 1956;178(4537):792–794.
- Madigan C, Malik P. Pathophysiology and therapy for haemoglobinopathies; Part I: sickle cell

- disease. *Expert Rev Mol Med*. 2006;8(9):1–23.
- Platt OS, et al. Mortality in sickle cell disease. Life expectancy and risk factors for early death. *N Engl J Med*. 1994;330(23):1639–1644.
- Boyd JH, Macklin EA, Strunk RC, DeBaun MR. Asthma is associated with increased mortality in

- individuals with sickle cell anemia. *Haematologica*. 2007;92(8):1115–1118.
- Ozbek OY, Malbora B, Sen N, Yazici AC, Ozyurek E, Ozbek N. Airway hyperreactivity detected by methacholine challenge in children with sickle cell disease. *Pediatr Pulmonol*. 2007;42(12):1187–1192.

6. Leong MA, Dampier C, Varlotta L, Allen JL. Airway hyperreactivity in children with sickle cell disease. *J Pediatr*. 1997;131(2):278–283.
7. Field JJ, et al. Airway hyperresponsiveness in children with sickle cell anemia. *Chest*. 2011;139(3):563–568.
8. Vendramini EC, Vianna EO, De Lucena Ângulo I, De Castro FB, Martinez JAB, Terra-Filho J. Lung function and airway hyperresponsiveness in adult patients with sickle cell disease. *Am J Med Sci*. 2006;332(2):68–72.
9. Sen N, Kozanoglu I, Karatasli M, Ermis H, Boga C, Eyuboglu F. Pulmonary function and airway hyperresponsiveness in adults with sickle cell disease. *Lung*. 2009;187(3):195–200.
10. Knight-Madden JM, Forrester TS, Lewis NA, Greenough A. Asthma in children with sickle cell disease and its association with acute chest syndrome. *Thorax*. 2005;60(3):206–210.
11. Koumbourlis AC, Zar HJ, Hurler-Jensen A, Goldberg MR. Prevalence and reversibility of lower airway obstruction in children with sickle cell disease. *J Pediatr*. 2001;138(2):188–192.
12. Sylvester KP, Patey RA, Rafferty GF, Rees D, Thein SL, Greenough A. Airway hyperresponsiveness and acute chest syndrome in children with sickle cell anemia. *Pediatr Pulmonol*. 2007;42(3):272–276.
13. Boyd JH, Macklin EA, Strunk RC, DeBaun MR. Asthma is associated with acute chest syndrome and pain in children with sickle cell anemia. *Blood*. 2006;108(9):2923–2927.
14. Boyd JH, DeBaun MR, Morgan WJ, Mao J, Strunk RC. Lower airway obstruction is associated with increased morbidity in children with sickle cell disease. *Pediatr Pulmonol*. 2009;44(3):290–296.
15. Cohen RT, Madadi A, Blinder MA, DeBaun MR, Strunk RC, Field JJ. Recurrent, severe wheezing is associated with morbidity and mortality in adults with sickle cell disease. *Am J Hematol*. 2011;86(9):756–761.
16. Glassberg JA, Chow A, Wisnivesky J, Hoffman R, DeBaun MR, Richardson LD. Wheezing and asthma are independent risk factors for increased sickle cell disease morbidity. *Br J Haematol*. 2012;159(4):472–479.
17. Wills-Karp M, et al. Interleukin-13: central mediator of allergic asthma. *Science*. 1998;282(5397):2258–2261.
18. Vargaftig BB, Singer M. Leukotrienes mediate murine bronchopulmonary hyperreactivity, inflammation, and part of mucosal metaplasia and tissue injury induced by recombinant murine interleukin-13. *Am J Respir Cell Mol Biol*. 2003;28(4):410–419.
19. Zhu Z, et al. Pulmonary expression of interleukin-13 causes inflammation, mucus hypersecretion, subepithelial fibrosis, physiologic abnormalities, and eotaxin production. *J Clin Invest*. 1999;103(6):779–788.
20. Setty BNY, Stuart MJ. Eicosanoids in sickle cell disease: Potential relevance of neutrophil leukotriene B4 to disease pathophysiology. *J Lab Clin Med*. 2002;139(2):80–89.
21. Jennings JE, et al. Elevated urinary leukotriene E4 levels are associated with hospitalization for pain in children with sickle cell disease. *Am J Hematol*. 2008;83(8):640–643.
22. Monteiro APT, et al. Leukotriene B4 mediates neutrophil migration induced by heme. *J Immunol*. 2011;186(11):6562–6567.
23. Holgate ST, Peters-Golden M, Panettieri RA, Henderson WR Jr. Roles of cysteinyl leukotrienes in airway inflammation, smooth muscle function, and remodeling. *J Allergy Clin Immunol*. 2003;111(1 suppl):S18–S36.
24. Knorr B, et al. Montelukast, a leukotriene receptor antagonist, for the treatment of persistent asthma in children aged 2 to 5 years. *Pediatrics*. 2001;108(3):e48.
25. Reiss TF, et al. Montelukast, a once-daily leukotriene receptor antagonist, in the treatment of chronic asthma: A multicenter, randomized, double-blind trial. *Arch Intern Med*. 1998;158(11):1213–1220.
26. Perelman N, et al. Placenta growth factor activates monocytes and correlates with sickle cell disease severity. *Blood*. 2003;102(4):1506–1514.
27. Sundaram N, et al. High levels of placenta growth factor in sickle cell disease promote pulmonary hypertension. *Blood*. 2010;116(1):109–112.
28. Pászty C, et al. Transgenic knockout mice with exclusively human sickle hemoglobin and sickle cell disease. *Science*. 1997;278(5339):876–878.
29. Patel N, Sundaram N, Yang M, Madigan C, Kalra VK, Malik P. Placenta growth factor (PLGF), a novel inducer of plasminogen activator inhibitor-1 (PAI-1) in sickle cell disease (SCD). *J Biol Chem*. 2010;285(22):16713–16722.
30. Lajoie S, et al. Complement-mediated regulation of the IL-17A axis is a central genetic determinant of the severity of experimental allergic asthma. *Nat Immunol*. 2010;11(10):928–935.
31. McGovern TK, Robichaud A, Fereydoonad L, Schuessler TF, Martin JG. Evaluation of respiratory system mechanics in mice using the forced oscillation technique. *J Vis Exp*. 2013;(75):e50172.
32. Hou HH, Cheng SL, Liu HT, Yang FZ, Wang HC, Yu CJ. Elastase induced lung epithelial cell apoptosis and emphysema through placenta growth factor. *Cell Death Dis*. 2013;4:e793.
33. Janér J, Andersson S, Haglund C, Karikoski R, Lassus P. Placental growth factor and vascular endothelial growth factor receptor-2 in human lung development. *Pediatrics*. 2008;122(2):340–346.
34. DiPalma T, et al. The placenta growth factor gene of the mouse. *Mamm Genome*. 1996;7(1):6–12.
35. Tsao PN, et al. Overexpression of placenta growth factor contributes to the pathogenesis of pulmonary emphysema. *Am J Respir Crit Care Med*. 2004;169(4):505–511.
36. Patel N, Gonsalves CS, Yang M, Malik P, Kalra VK. Placenta growth factor induces 5-lipoxygenase-activating protein to increase leukotriene formation in sickle cell disease. *Blood*. 2009;113(5):1129–1138.
37. Patel N, Kalra VK. Placenta growth factor-induced early growth response 1 (Egr-1) regulates hypoxia-inducible factor-1alpha (HIF-1α) in endothelial cells. *J Biol Chem*. 2010;285(27):20570–20579.
38. Laitinen LA, Haahtela T, Vilkkä V, Lee TH, Spur BW. Leukotriene E4 and granulocytic infiltration into asthmatic airways. *Lancet*. 1993;341(8851):989–990.
39. Gauvreau GM, Parameswaran KN, Watson RM, O'Byrne PM. Inhaled leukotriene E(4), but not leukotriene D(4), increased airway inflammatory cells in subjects with atopic asthma. *Am J Respir Crit Care Med*. 2001;164(8):1495–1500.
40. Nabe T, Yamashita K, Miura M, Kawai T, Kohno S. Cysteinyl leukotriene-dependent interleukin-5 production leading to eosinophilia during late asthmatic response in guinea-pigs. *Clin Exp Allergy*. 2002;32(4):633–640.
41. Guajardo JR, et al. Altered gene expression profiles in nasal respiratory epithelium reflect stable versus acute childhood asthma. *J Allergy Clin Immunol*. 2005;115(2):243–251.
42. Patel N, Gonsalves CS, Malik P, Kalra VK. Placenta growth factor augments endothelin-1 and endothelin-B receptor expression via hypoxia-inducible factor-1α. *Blood*. 2008;112(3):856–865.
43. Thivierge M, Staňková J, Rola-Pleszczynski M. IL-13 and IL-4 up-regulate cysteinyl leukotriene 1 receptor expression in human monocytes and macrophages. *J Immunol*. 2001;167(5):2855–2860.
44. Chibana K, Ishii Y, Asakura T, Fukuda T. Up-regulation of cysteinyl leukotriene 1 receptor by IL-13 enables human lung fibroblasts to respond to leukotriene C4 and produce eotaxin. *J Immunol*. 2003;170(8):4290–4295.
45. Jackson SE, Holloway JW, Warner JA, Sampson AP. Interleukin-13, but not indomethacin, increases cysteinyl-leukotriene synthesis in human lung macrophages. *J Allergy (Cairo)*. 2012;2012:348741.
46. Doherty TA, Khorram N, Lund S, Mehta AK, Croft M, Broide DH. Lung type 2 innate lymphoid cells express cysteinyl leukotriene receptor 1, which regulates TH2 cytokine production. *J Allergy Clin Immunol*. 2013;132(1):205–213.
47. Tordjman R, et al. Erythroblasts are a source of angiogenic factors. *Blood*. 2001;97(7):1968–1974.
48. Selvaraj SK, Giri RK, Perelman N, Johnson C, Malik P, Kalra VK. Mechanism of monocyte activation and expression of proinflammatory cytokines by placenta growth factor. *Blood*. 2003;102(4):1515–1524.
49. Wills-Karp M, Ewart SL. The genetics of allergen-induced airway hyperresponsiveness in mice. *Am J Respir Crit Care Med*. 1997;156(4):S89–S96.
50. Ewart SL, et al. Quantitative trait loci controlling allergen-induced airway hyperresponsiveness in inbred mice. *Am J Respir Cell Mol Biol*. 2000;23(4):537–545.
51. Mancini EA, Hillery CA, Bodian CA, Zhang ZG, Luty GA, Collier BS. Pathology of Berkeley sickle cell mice: similarities and differences with human sickle cell disease. *Blood*. 2006;107(4):1651–1658.
52. Bobic S, et al. Placental growth factor contributes to bronchial neutrophilic inflammation and edema in allergic asthma. *Am J Respir Cell Mol Biol*. 2012;46(6):781–789.
53. Pritchard KA, et al. Effects of experimental asthma on inflammation and lung mechanics in sickle cell mice. *Am J Respir Cell Mol Biol*. 2012;46(3):389–396.
54. McKinley L, Kim J, Bolgos G, Siddiqui J, Remick D. Allergens induce enhanced bronchoconstriction and leukotriene production in C5 deficient mice. *Respir Res*. 2006;7:129.

55. Irvin CG, Tu YP, Sheller JR, Funk CD. 5-Lipoxygenase products are necessary for ovalbumin-induced airway responsiveness in mice. *Am J Physiol*. 1997;272(6 pt 1):L1053-L1058.
56. Peebles RS, et al. Allergen-induced airway hyperresponsiveness mediated by cyclooxygenase inhibition is not dependent on 5-lipoxygenase or IL-5, but is IL-13 dependent. *J Immunol*. 2005;175(12):8253-8259.
57. Shin K, Hwang JJ, Kwon BI, Kheradmand F, Corry DB, Lee SH. Leukotriene enhanced allergic lung inflammation through induction of chemokine production. *Clin Exp Med*. 2015;15(3):233-244.
58. Lewis RA, Austen KF, Soberman RJ. Leukotrienes and other products of the 5-lipoxygenase pathway. Biochemistry and relation to pathobiology in human diseases. *N Engl J Med*. 1990;323(10):645-655.
59. Bellik L, Vinci MC, Filippi S, Ledda F, Parenti A. Intracellular pathways triggered by the selective FLT-1-agonist placental growth factor in vascular smooth muscle cells exposed to hypoxia. *Br J Pharmacol*. 2005;146(4):568-575.
60. Pope SM, Zimmermann N, Stringer KF, Karow ML, Rothenberg ME. The eotaxin chemokines and CCR3 are fundamental regulators of allergen-induced pulmonary eosinophilia. *J Immunol*. 2005;175(8):5341-5350.
61. Hogan SP, Matthaei KI, Young JM, Koskinen A, Young IG, Foster PS. A novel T cell-regulated mechanism modulating allergen-induced airways hyperreactivity in BALB/c mice independently of IL-4 and IL-5. *J Immunol*. 1998;161(3):1501-1509.
62. Flood-Page PT, Menzies-Gow AN, Kay AB, Robinson DS. Eosinophil's role remains uncertain as anti-interleukin-5 only partially depletes numbers in asthmatic airway. *Am J Respir Crit Care Med*. 2003;167(2):199-204.
63. Eum S-Y, Maghni K, Tolloczko B, Eidelman DH, Martin JG. IL-13 may mediate allergen-induced hyperresponsiveness independently of IL-5 or eotaxin by effects on airway smooth muscle. *Am J Physiol Lung Cell Mol Physiol*. 2005;288(3):L576-L584.
64. Kuperman DA, et al. Direct effects of interleukin-13 on epithelial cells cause airway hyperreactivity and mucus overproduction in asthma. *Nat Med*. 2002;8(8):885-889.
65. Fischer C, et al. Anti-PLGF inhibits growth of VEGF(R)-inhibitor-resistant tumors without affecting healthy vessels. *Cell*. 2007;131(3):463-475.
66. Li B, et al. Elevated PLGF contributes to small-cell lung cancer brain metastasis. *Oncogene*. 2013;32(24):2952-2962.
67. Cheng S-L, Wang H-C, Yu C-J, Yang P-C. Increased expression of placenta growth factor in COPD. *Thorax*. 2008;63(6):500-506.
68. Belcher JD, et al. Transgenic sickle mice have vascular inflammation. *Blood*. 2003;101(10):3953-3959.
69. Hebbel RP, Osarogiagbon R, Kaul D. The endothelial biology of sickle cell disease: inflammation and a chronic vasculopathy. *Microcirculation*. 2004;11(2):129-151.
70. Kaul DK, Hebbel RP. Hypoxia/reoxygenation causes inflammatory response in transgenic sickle mice but not in normal mice. *J Clin Invest*. 2000;106(3):411-420.
71. Kaul DK, Liu X-d, Choong S, Belcher JD, Vercellotti GM, Hebbel RP. Anti-inflammatory therapy ameliorates leukocyte adhesion and microvascular flow abnormalities in transgenic sickle mice. *Am J Physiol Heart Circ Physiol*. 2004;287(1):H293-H301.
72. Vichinsky EP, et al. Causes and outcomes of the acute chest syndrome in sickle cell disease. National Acute Chest Syndrome Study Group. *N Engl J Med*. 2000;342(25):1855-1865.
73. Knight-Madden JM, Barton-Gooden A, Weaver SR, Reid M, Greenough A. Mortality, asthma, smoking and acute chest syndrome in young adults with sickle cell disease. *Lung*. 2013;191(1):95-100.
74. Koumbourlis AC, Hurler-Jensen A, Bye MR. Lung function in infants with sickle cell disease. *Pediatr Pulmonol*. 1997;24(4):277-281.
75. Koumbourlis AC, Lee DJ, Lee A. Longitudinal changes in lung function and somatic growth in children with sickle cell disease. *Pediatr Pulmonol*. 2007;42(6):483-488.
76. Kramer EL, et al. Early growth response-1 suppresses epidermal growth factor receptor-mediated airway hyperresponsiveness and lung remodeling in mice. *Am J Respir Cell Mol Biol*. 2009;41(4):415-425.
77. Martin LJ, et al. Functional variant in the autophagy-related 5 gene promoter is associated with childhood asthma. *PLoS One*. 2012;7(4):e33454.